



**Supplementary Sailing Instructions  
(Numbering Corresponds to RRS Appendix S)**

**4 SIGNALS MADE ASHORE**

4.1 Signals made ashore will be displayed from a flagpole situated on the western edge of the Commodore's Dock. When flag AP is displayed ashore, '1 minute' is replaced with 'not less than 30 minutes' in Race Signals AP.

**5 SCHEDULE OF RACES**

Series A	(6 pm local)	April 30, May 7, 14, 21, 2025
Series B	(6 pm local)	May 28, June 4, 11, 18, 2025
Series C	(6 pm local)	June 25, July 2, 9, 16, 23, 2025
Series D	(6 pm local)	July 30, August 6, 13, 20, 27, 2025

**6 CLASS FLAGS**

PHRF 1	NUMERAL PENNANT 1
SANTANA 525	NUMERAL PENNANT 2
PHRF 3	NUMERAL PENNANT 3

## 7 THE COURSES

7.2 The course will be displayed at the stern of the RC boat as a series of letters.

## 8 MARKS

8.2 All marks to be left to port. X denotes a gate between X mark and a staff displaying an orange flag on the signal vessel when X is displayed mid-course. This gate must be crossed in the direction travelled from the previous mark.

The following marks can be rounding marks: A, B, C, D, and E.

## 9 THE START

9.2 The starting line is between a staff displaying an orange flag on the signal vessel and mark X.

9.3 There will be a rolling start. Fleet 3 will start first followed by Fleet 1 and then Fleet 2.

9.4 A boat must keep clear of the start area by 50 meters unless the warning signal for her start sequence has been made.

## 11 THE FINISH

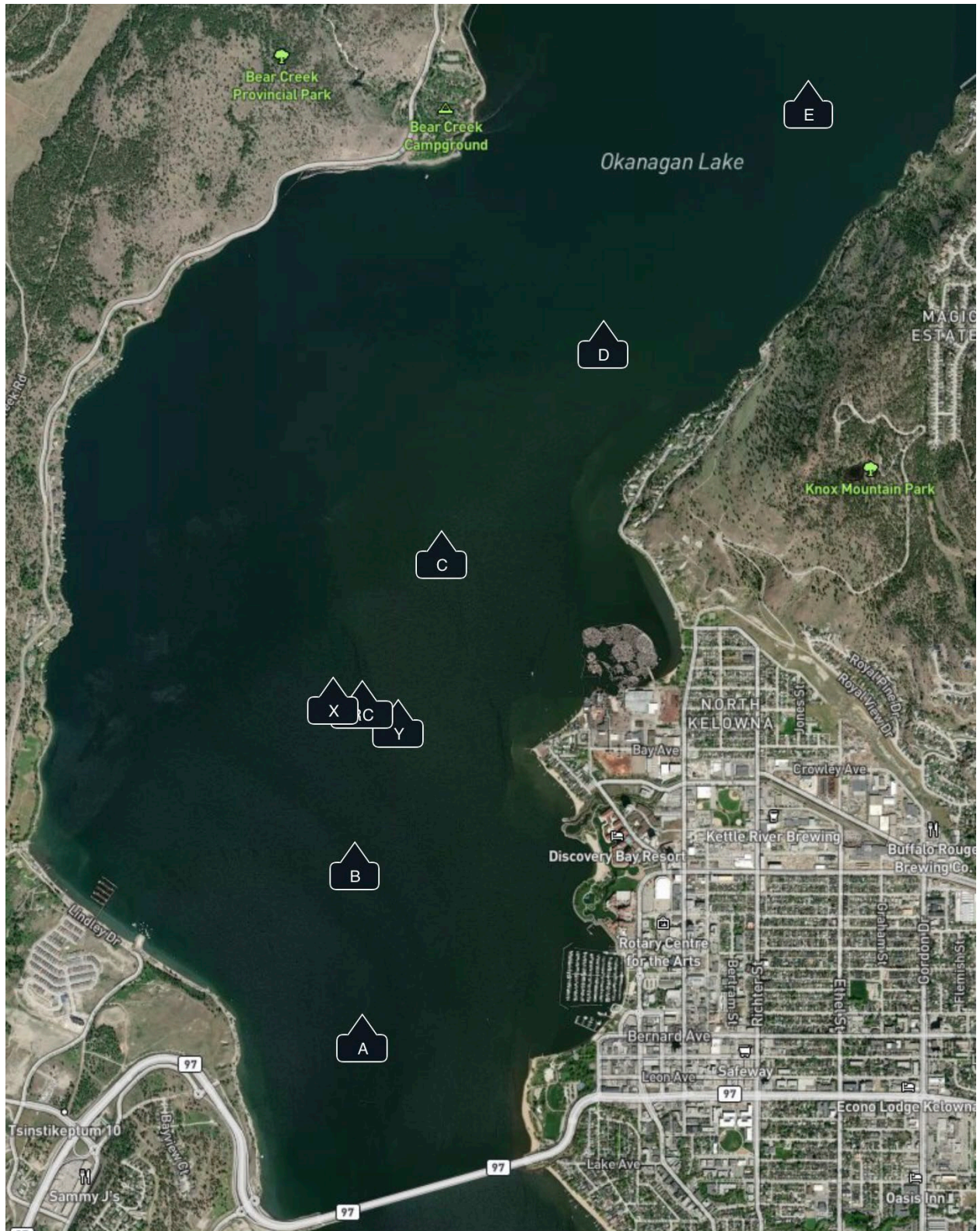
11.1 The finishing line is between the blue flag mounted to the signal boat and the course side of Mark Y.

11.2 If the Race Committee is absent when a boat finishes, she shall report her finishing time, and her position in relation to nearby boats, to the race committee at the first reasonable opportunity.

## 12 TIME LIMITS

RACE TIME LIMIT	2 HOURS
-----------------	---------

## Kelowna Yacht Club Course and Marks



## Kelowna Yacht Club Mark Coordinates

MARK (South to North)	COORDINATES D°MM.mm
A	49°53.24N 119°30.95W
B	49°53.70N 119°30.98W
X	49°54.14N 119°31.07W
RC	49°54.13N 119°30.95W
Y	49°54.08N 119°30.80W
C	49°54.53N 119°30.62W
D	49°55.09N 119°29.95W
E	49°55.73N 119°29.10W

