



**BLOSSOM TIME  
REGATTA**

*Blossom Time Regatta  
Kelowna Yacht Club  
May 29-31, 2026*

**Supplementary Sailing Instructions  
(Numbering Corresponds to RRS Appendix S)**

**4 SIGNALS MADE ASHORE**

4.1 Signals made ashore will be displayed from a flagpole situated on the western edge of the Commodore's Dock. When flag AP is displayed ashore, '1 minute' is replaced with 'not less than 30 minutes' in Race Signals AP.

**5 SCHEDULE OF RACES**

Saturday, May 30, 2026	First Warning Signal Latest Warning Signal	11 a.m. PDT 4 p.m. PDT
Sunday, May 31, 2026	First Warning Signal Latest Warning Signal	10:30 a.m. PDT 2:30 p.m. PDT

**6 CLASS FLAGS**

PHRF 1	NUMERAL PENNANT 1
SANTANA 525	NUMERAL PENNANT 2
PHRF 3	NUMERAL PENNANT 3

**7 THE COURSES**

7.2 *Addendum A Course Diagram*

7.3 Legs of the course will not be changed after the preparatory signal. This changes RRS 33.

## 8 MARKS

8.1 Addendum B *Mark Coordinates*.

## 9 THE START

9.2 The starting line will be between a staff displaying an orange flag on the signal vessel and the course side of the green starting mark

9.3 DP][NP] Boats whose warning signal has not been made shall avoid the starting area during the starting sequence for other races

9.4 The Start line is to be considered an obstruction and shall not be crossed unless a boat is starting or within her start sequence

9.5 A boat starting later than 4 minutes after her starting signal will be scored Did Not Start without a hearing. This changes RRS A5.1 and A5.2.

## 11 THE FINISH

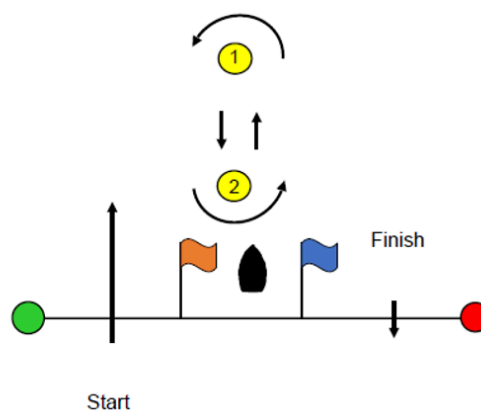
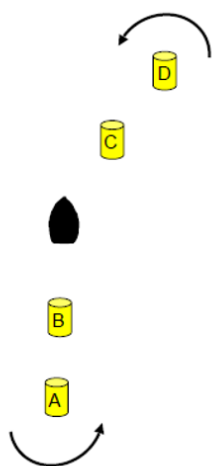
11.1 The finishing line will be between a staff displaying a blue flag mounted on the signal vessel and the course side of the red finishing mark

## 12 TIME LIMITS

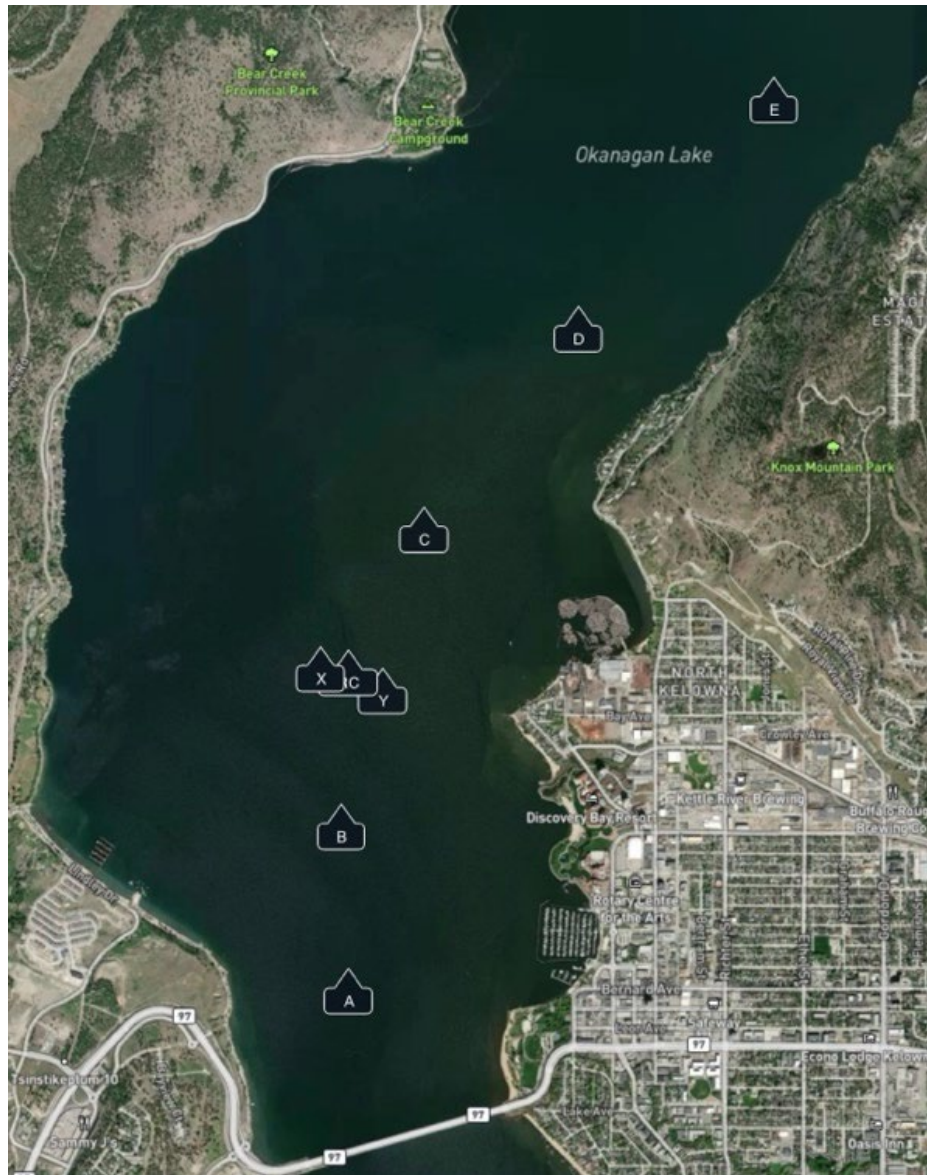
RACE TIME LIMIT	2 HOURS
-----------------	---------

## APPENDIX A COURSE DIAGRAM

Signal	Mark Rounding Order
L1	Start - 1 - Finish
L2	Start - 1 - 2 - 1 - Finish
L3	Start - 1 - 2 - 1 - 2 - 1 - Finish



Signal	Mark Rounding Order
4	Start - A - C - Finish
5	Start - A - D - Finish
6	Start - B - C - Finish
7	Start - B - D - Finish
8	Start - C - B - Finish
9	Start - C - A - Finish
10	Start - D - B - Finish
11	Start - D - A - Finish
12	Start - E - Finish



**APPENDIX B**  
**KELOWNA YACHT CLUB MARK COORDINATES**

<b>MARK (South to North)</b>	<b>COORDINATES D°MM.mm</b>
<b>A 1</b>	49°53.22N 119°31.04W
<b>B 2</b>	49°53.71N 119°30.97W
<b>X</b>	49°54.15N 119°31.06W
<b>RC</b>	49°54.17N 119°30.92W
<b>Y</b>	49°54.08N 119°30.80W
<b>C 2</b>	49°54.55N 119°30.59W
<b>D 1</b>	49°55.09N 119°29.91W
<b>E</b>	49°55.75N 119°29.14W

