



**Supplementary Sailing Instructions
(Numbering Corresponds to RRS Appendix S)**

4 SIGNALS MADE ASHORE

4.1 Signals made ashore will be displayed from a flagpole situated on the western edge of the Commodore's Dock. When flag AP is displayed ashore, '1 minute' is replaced with 'not less than 30 minutes' in Race Signals AP.

5 SCHEDULE OF RACES

| | | |
|---------------|--------------|--------------------|
| Warmup | (1 pm local) | April 12, 2026 |
| Spring Fringe | (1 pm local) | April 19, 26, 2026 |

6 CLASS FLAGS

| | |
|-------------|-------------------|
| PHRF 1 | NUMERAL PENNANT 1 |
| SANTANA 525 | NUMERAL PENNANT 2 |
| PHRF 3 | NUMERAL PENNANT 3 |

7 THE COURSES

7.2 The course will be displayed at the stern of the RC boat as a series of letters.

8 MARKS

8.2 All marks to be left to port. X denotes a gate between X mark and a staff displaying an orange flag on the signal vessel when X is displayed mid-course. This gate must be crossed in the direction travelled from the previous mark.

The following marks can be rounding marks: A, B, C, D, and E.

9 THE START

- 9.2 The starting line is between a staff displaying an orange flag on the signal vessel and mark X.
- 9.3 There will be a rolling start. Fleet 3 will start first followed by Fleet 1 and then Fleet 2. (Depending on the number of boats that show on the start line, Fleets 1&3 may be combined followed by Fleet 2, or alternatively just one start, in which case **the Committee Boat will announce on Ch 72**).
- 9.4 A boat must keep clear of the start area by 50 meters unless the warning signal for her start sequence has been made.

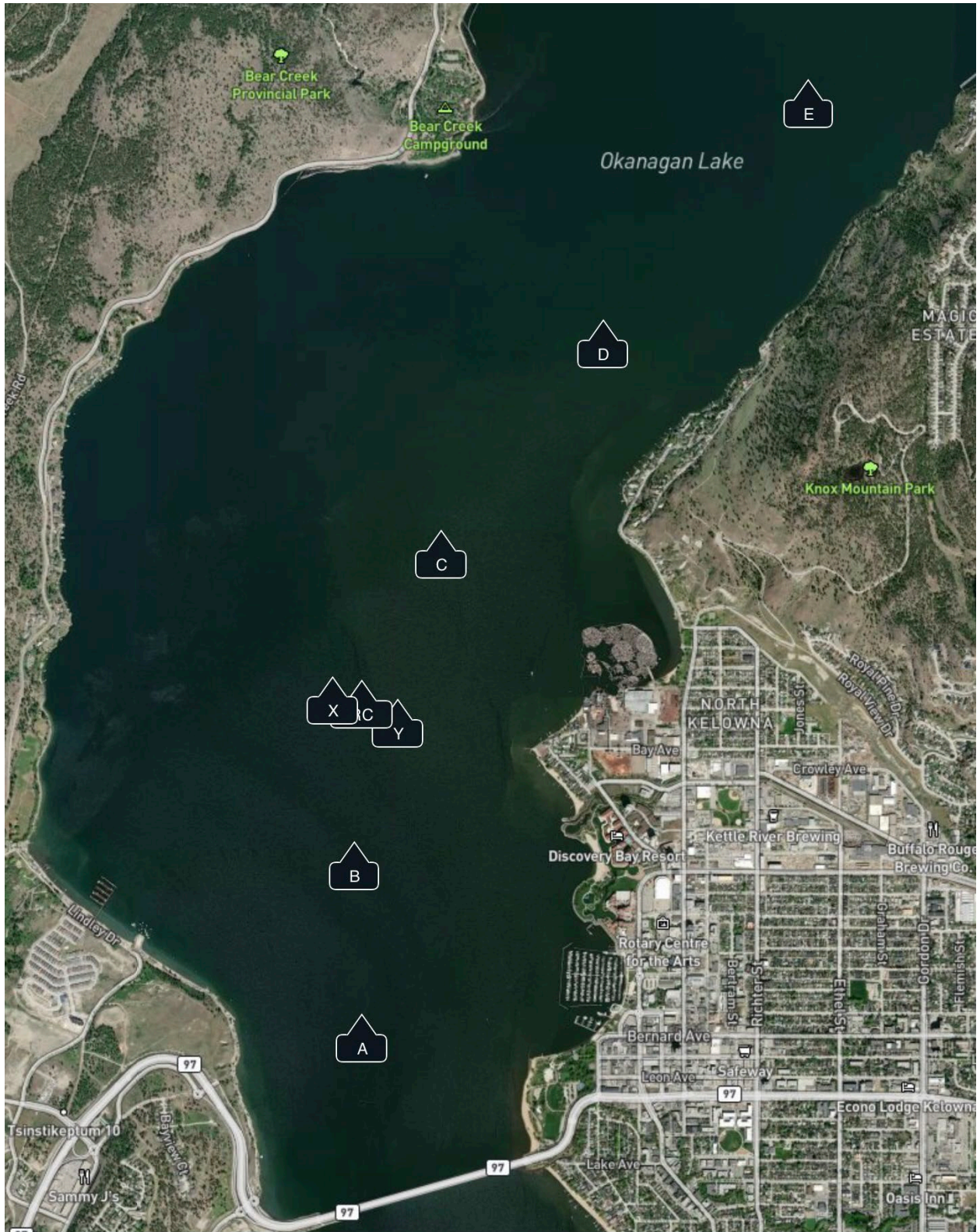
11 THE FINISH

- 11.1 The finishing line is between the blue flag mounted to the signal boat and the course side of Mark Y.
- 11.2 If the race committee is absent when a boat finishes, she shall report her finishing time, and her position in relation to nearby boats, to the race committee at the first reasonable opportunity.

12 TIME LIMITS

| | |
|-----------------|---------|
| RACE TIME LIMIT | 3 HOURS |
|-----------------|---------|

Kelowna Yacht Club Course and Marks



Kelowna Yacht Club Mark Coordinates

| MARK (South to North) | COORDINATES D°MM.mm |
|-----------------------|----------------------|
| A | 49°53.24N 119°30.95W |
| B | 49°53.70N 119°30.98W |
| X | 49°54.14N 119°31.07W |
| RC | 49°54.13N 119°30.95W |
| Y | 49°54.08N 119°30.80W |
| C | 49°54.53N 119°30.62W |
| D | 49°55.09N 119°29.95W |
| E | 49°55.73N 119°29.10W |

