



2026 Kelowna Yacht Club (KYC)
Women's Monday Night Racing

Kelowna Yacht Club

April 13 - June 22, 2026

NOTICE of RACE (NoR)

1.0 RULES

- 1.1 The event is governed by the rules as defined in *The Racing Rules of Sailing* (2025-2028),
- 1.2 *Sail Canada Prescriptions to The Racing Rules of Sailing* apply, available online at kelownayachtclub.com/racing/race-management-resources/
- 1.3 *PHRF-BC Rules* apply to handicap racing fleets, available online at bcsailing.ca.

2.0 SAILING INSTRUCTIONS

- 2.1 The sailing Instructions will be available online after 12 pm (noon) on or before March 30, 2026, at kelownayachtclub.com/racing/open-racing/.
- 2.2 The sailing instructions will consist of the instructions in RRS Appendix S, Standard Sailing Instructions, and supplementary sailing instructions that will be posted to the official online notice board kelownayachtclub.com/racing/open-racing/.

3.0 COMMUNICATION

- 3.1 The online official notice board is located at kelownayachtclub.com/racing/open-racing/.
- 3.2 [Discretionary Penalty - DP] All boats shall carry a VHF radio capable of communicating on Channel 72.
- 3.3 On the water, the race committee will make courtesy broadcasts to competitors on VHF radio, channel 72.
- 3.4 [DP] While racing, except in an emergency, a boat shall not make voice or data transmissions and shall not receive voice or data communication that is not available to all boats.

4.0 ELIGIBILITY AND ENTRY

4.1 The event is open to all keel boats that,

4.1.1. Are comprised of all female crew, or

4.1.2. All female crew plus one coach (male coach permitted).

4.1.2.a Coaches are not permitted to be hands on or participate in handling of the boat or that boat will be DSQ.

4.2 The PHRF-BC rating system with time-on-time calculations apply.

4.3 Classes are defined as follows:

Fleet 1	PHRF	Women Only
Fleet 2	PHRF	Women plus coaches

4.4 To be considered an entry in the event, a boat shall complete all registration requirements and pay all fees.

5.0 FEES

5.1 All Crew members as well as coaches must complete the 'KYC Registration - for Crew' form located on the KYC website. If one boat position is shared by two ladies, both are required to register, only one needs to pay.

5.2 Skippers and Skippers of coached boats must register by completing the 'KYC Women's Sailing Registration' link located on the KYC website.

5.3 Entry fees for all Classes are as follows:

Skipper and Boat registration	\$40 Plus Software Fee + GST
KYC Member Crew	\$40 Plus Software Fee + GST
Non-Member Crew	\$70 Plus Software Fee + GST
Coaches	\$0.00

6.0 SCHEDULE

Practice	6 pm local	April 13, 20, 2026
Series A	6 pm local	April 27, May 4, 11, 25, 2026
Series B	6 pm local	June 1, 8, 15, 22, 2026

Dock Party	April 27, 2026
Dock Party	June 1, 2026
Wind Up Dinner	June 29, 2026

7.0 EQUIPMENT INSPECTION

7.1 Boats may be inspected at any time.

7.2 Transport Canada required safety equipment must be on board at all times and may be inspected at any time.

8.0 VENUE

8.1 Addendum A, B.

9.0 COURSES

9.1 Courses to be sailed will be on Okanagan Lake in the vicinity of the Kelowna Yacht Club located at 1370 Water St., Kelowna, B.C.

9.2 The course will be a combination of permanent KYC marks A, B, C, D, and E. All turning marks are to be left to port. The start line will be comprised of the Race Committee boat and Mark X. The finish line will be comprised of the Race Committee boat and Mark Y.

10.0 SCORING

10.1 The low point scoring system of Appendix A of the RRS will apply.

- a) When fewer than four races have been completed in a series a boat's score for that series shall be the total of her race scores within that series.
- b) When four or more races have been completed in a series a boat's score for the series shall be the total of her race scores within that series excluding her worst score.
- c) One or more completed races will constitute a series.

10.2 Rule A5.3 applies.

11.0 PRIZES

11.1 Prizes will be awarded for 1st, 2nd, and 3rd place in each fleet for their overall score of series A and B.

11.2 The Club trophy will be awarded to the overall winner of series A and B for each fleet.

12.0 SAFETY

12.1 A boat that retires from a race shall notify the race committee at the first reasonable opportunity.

12.2 A boat may be requested to assist another vessel as directed by the Race Officer of the Day.

12.3 [DP] When instructed by a race official on the water, a boat shall proceed to a designated area for inspection.

13.0 RISK STATEMENT

13.1 RRS 3 states: 'The responsibility for a boat's decision to participate in a race or to continue to race is hers alone.' By participating in this event, each competitor agrees and acknowledges that sailing is a potentially dangerous activity with inherent risks. These risks include strong winds and rough seas, sudden changes in weather, failure of equipment, boat handling errors, poor seamanship by other boats, loss of balance on an

unstable platform, and fatigue resulting in an increased risk of injury. Inherent in the sport of sailing is the risk of permanent, catastrophic injury or death by drowning, trauma, hypothermia, or other causes.

13.2 The organizing authority, management, Board of Directors and volunteers, will not accept any liability for material damage or personal injury or death sustained in conjunction with or prior to, during or after this race series.

14.0 INSURANCE

14.1 Each participating boat shall be insured with valid third-party liability insurance with a minimum coverage of \$2,750,000 or minimum industry standard per incident or the equivalent. The organizing Authority does not accept responsibility for verifying that a competitor holds valid insurance.

15.0 ENVIRONMENTAL POLICY

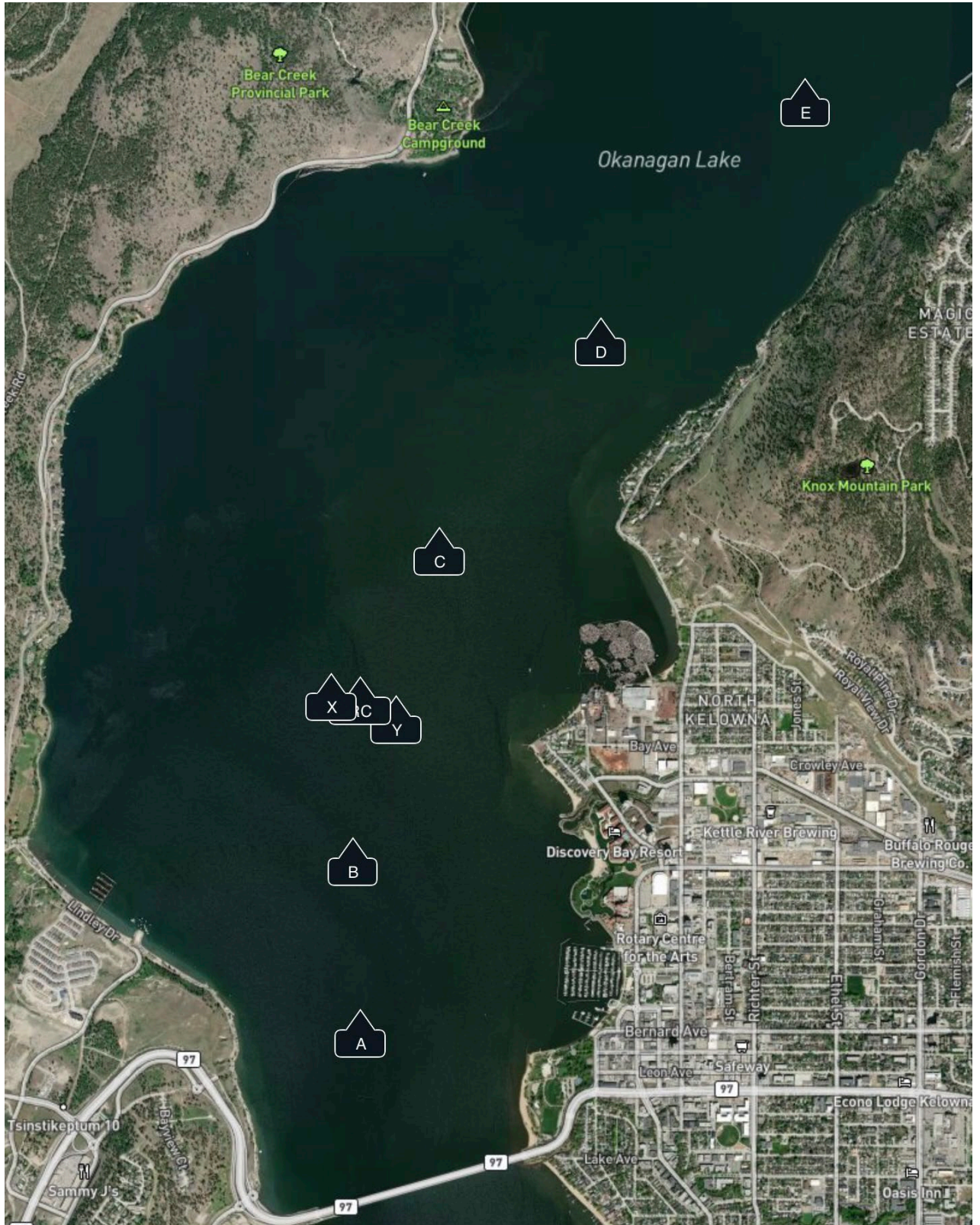
15.1 All regatta participants are requested to adhere to the Kelowna Yacht Club Environmental Policy including: eliminating the release of contaminants to the water column, both directly and indirectly, minimize the release of pollutants to the atmosphere, avoid contamination of the ground, adopt waste reduction, reuse and recycling strategies, optimize energy and water conservation, promote good environmental practices to all parties, abide by, and, where possible, exceed the requirements of all relevant legislation.

16.0 CONTACT

For further information, please contact:

Christine Musgrave at cmusgrave.pm@gmail.com

NoR ADDENDUM A
RACE MARKS AND AREA



(NoR) ADDENDUM B
Approximate Mark Locations

MARK (South to North)	COORDINATES D°MM.mm
A	49°53.24N 119°30.95W
B	49°53.70N 119°30.98W
X	49°54.14N 119°31.07W
RC	49°54.13N 119°30.95W
Y	49°54.08N 119°30.80W
C	49°54.53N 119°30.62W
D	49°55.09N 119°29.95W
E	49°55.73N 119°29.10W